


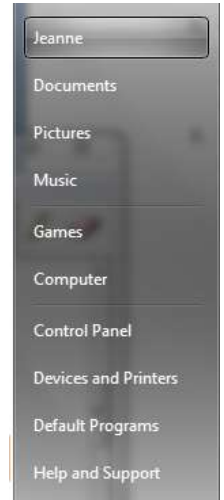
## How to Install 4D Embroidery Software on Windows 7


Download the Windows 7 dongle drivers from the 4D Embroidery website. Link to [http://www.vsmsoftware.net/FAQdatabase/search\\_4D.aspx](http://www.vsmsoftware.net/FAQdatabase/search_4D.aspx). Type in "Windows 7" in the search window. Click the link "Will my 4D software work with Windows 7?" Click the link on this page to download the Windows 7 dongle driver.

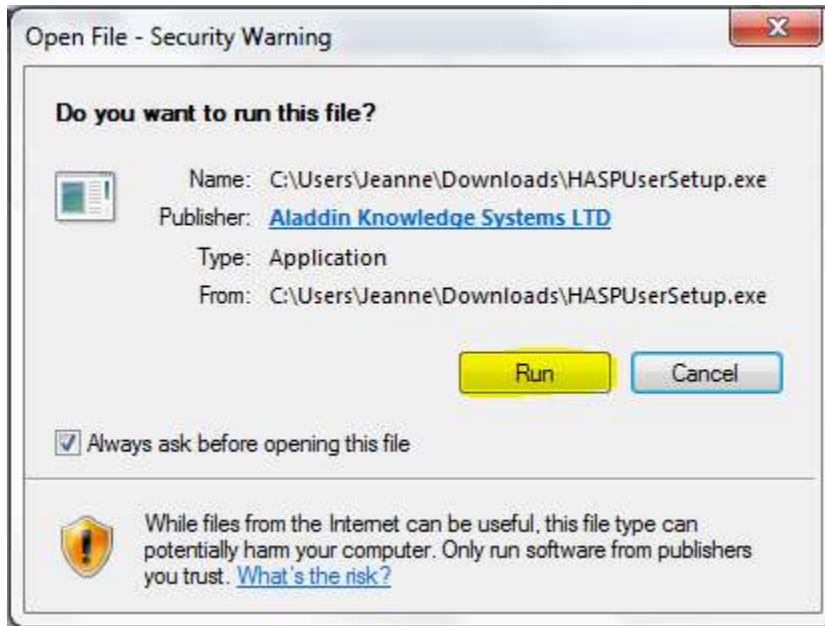
Install the updated drivers before you install 4D software.

1. Most computers automatically put downloaded files in the [Username]/Download

folder. To open this folder, go to Windows Start . Slide the mouse right and up to your user name. Left click once on your user name (in the sample screenshot to the right, Jeanne). Double-click to open the Downloads folder



2. Double click on  HASPUUserSetup to run the installation program. If asked, confirm that you wish to Run the installation program as shown below.



Click Next, accept the license agreement, and then Next again. Wait as the program installs the dongle driver. Click Finish when the installation is complete.

3. Insert your dongle and wait as the computer installs the new drivers. The dongle should light up and the computer will show a message that your hardware is ready to use.
4. Install the 4D software as shown in the file, "4D Embroidery Installation Instructions."