

4D Embroidery Installation Instructions

© 2009 by Software Solutions

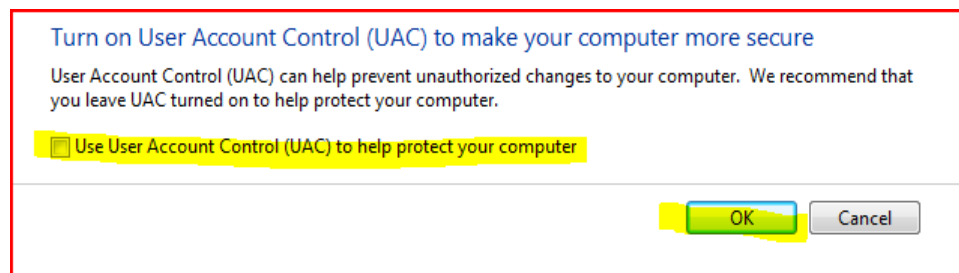
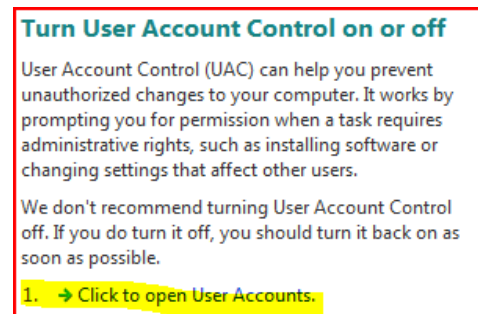
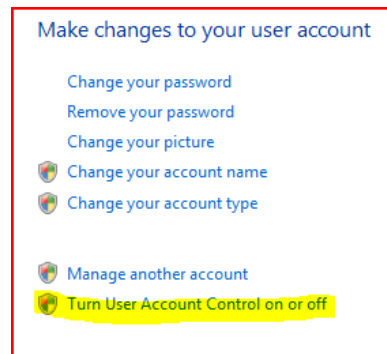
Jeanne Styles

Software Solutions: 4D Embroidery workbook series

www.learn4D.com

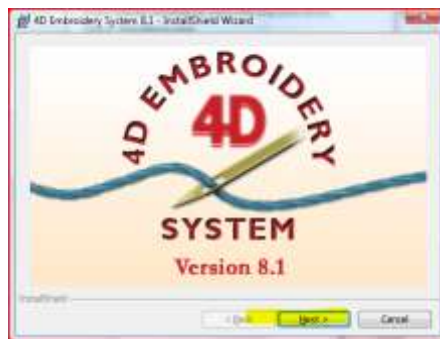
Before you begin the installation:

1. Deactivate your virus protection program (such as Norton, McAfee, etc). It is not necessary to uninstall them, just to deactivate them temporarily. Make sure to re-activate them after all installation and updates are completed.
2. For Vista users, go to Start→Help & Updates. In the search window, type “User Account Controls” and hit the Enter key.
3. Select Turn User Account On or Off.
4. Select Click to open User Accounts.
5. UNCHECK the User Account Control (UAC) to help protect your computer. Click OK.
6. Confirm that you do wish to turn off the UAC.
7. Your computer should re-boot to activate these changes.
8. Ensure that your computer has an active internet connection.



Installation Procedures

1. Insert the 4D installation DVD into the DVD drive.
2. Select Run Menu.exe
3. Click only ONCE on Install 4D Embroidery Software. (Do not Double click on this menu choice.)
4. Choose the appropriate language (English).
5. The program will begin automatic installation.
6. Choose Next twice to begin.
7. Accept the License agreement and choose Next.



8. Find the green sheet of paper inside the 4D Embroidery box. It is labeled "Product License". Type in the Product License Code shown near the bottom of the paper. You must enter the code exactly as shown. Guard this license code carefully as it will be required later if you need to re-install the program and if there are programs you might install in the future. Choose Next to continue.



9. Select Associate all embroidery files and then Next.

Associate all embroidery files

10. Choose Yes, place a shortcut on the desktop and Next.

Yes, place a shortcut on the desktop.

11. Choose Complete installation and Next.



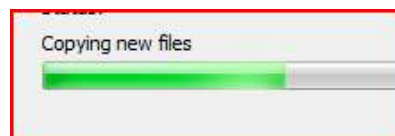
12. Click Install to begin the installation.



13. The computer will indicate the progression of the installation. This may take a while. Choose Next only after the progress bar indicates that it is complete.

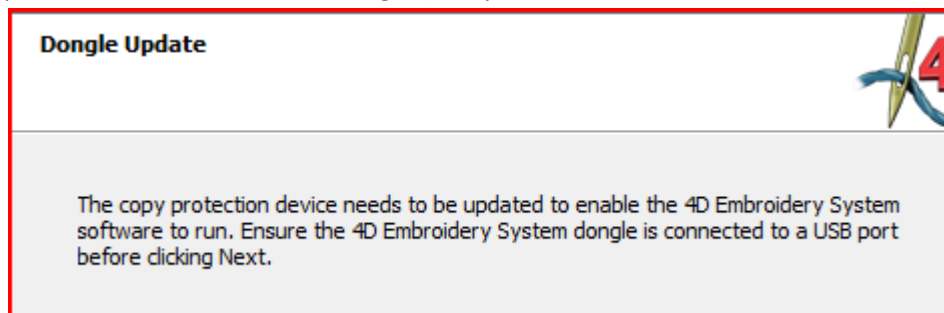


14. The program indicates that it is copying files.



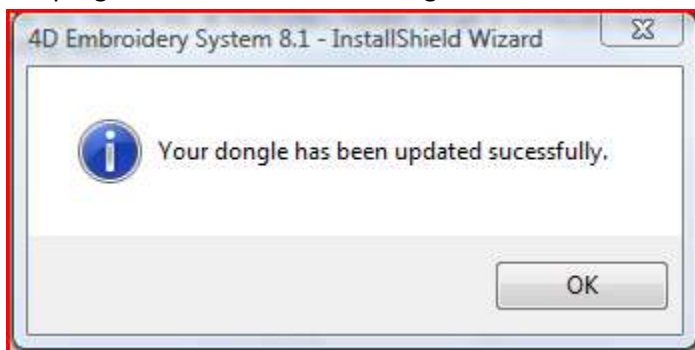
15. When prompted, insert the red or blue dongle (USB protection device-looks similar to a USB

stick drive).



16. Follow any prompts shown.

17. The program indicates that the dongle has been successfully updated. Select OK.



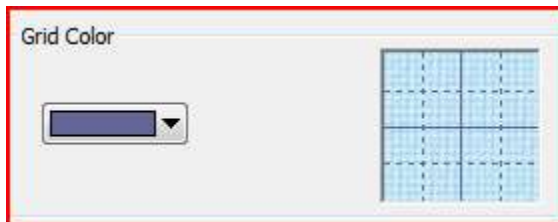
18. The 4D Configure Wizard opens. Choose Next to begin configuring your copy of 4D for the appropriate sewing machine and software preferences.



19. Choose your preferred background using the drop-down arrows. Next.



20. Unless you prefer otherwise, use the default Grid Color. Next.



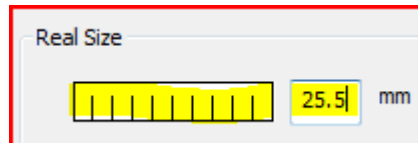
21. Use the drop-down arrow to choose from the available themes. Next.





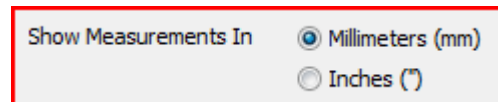
22. Choose the Realistic worksheet style. Next.

23. Physically measure the ruler shown on the screen to the nearest 1/2 of a millimeter. Enter this



value in the Real Size box. Next.

24. Choose Show Measurements in Millimeters (most hoops and designs are shown in metric, but if

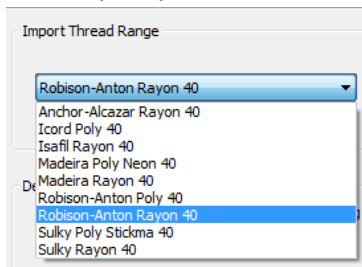


you prefer later, you can change this to inches). Next.

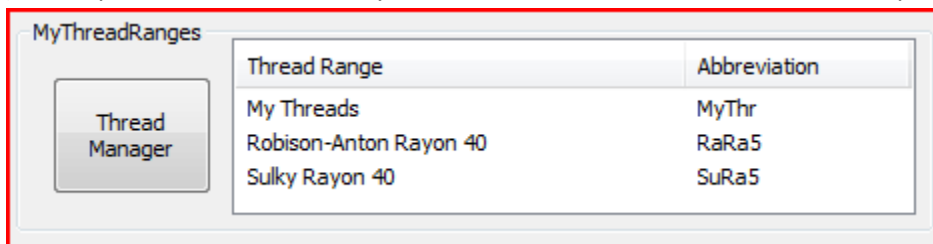
25. Select your preferred embroidery format to correspond with the embroidery machine you plan to use. The best format for Pfaff/Viking/Husqvarna machines is .vp3, however some machines will read multiple file formats. If you are unsure about the appropriate embroidery file format, check your embroidery machine manual. Next.



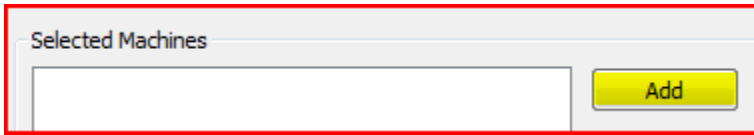
26. Choose your preferred default thread type and manufacturer. Next.



27. If desired, choose the Thread Manager to add additional threads to your list of threads. Next. (The steps shown here assume you choose not to add more threads at this point.)



28. Choose Add to select your embroidery machine.

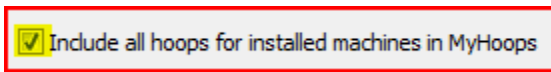


29. Choose Pfaff from the drop down list of machine brands and then select Machine = Creative Vision. You should add this machine even if you do not actually own the machine because it will add machine stitches to the letter tab in 4D Embroidery Extra. Ok.

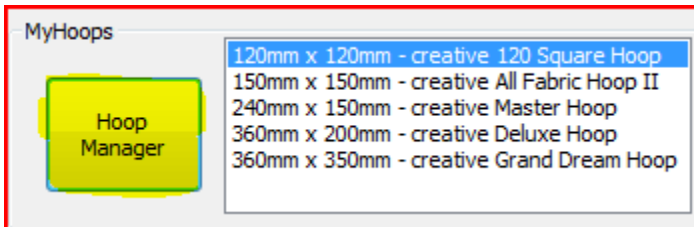


30. 4D Configure returns to the My Machines window. If you own a different machine, Add the appropriate machine. If you own a machine manufactured after the software was released (for example, the Viking Designer Diamond), you will follow the same procedure to add these machines. Even if you do not own a Designer Diamond, add this to the list of machines you have as you will gain additional machine stitches in the letter tab of 4D Embroidery Extra.

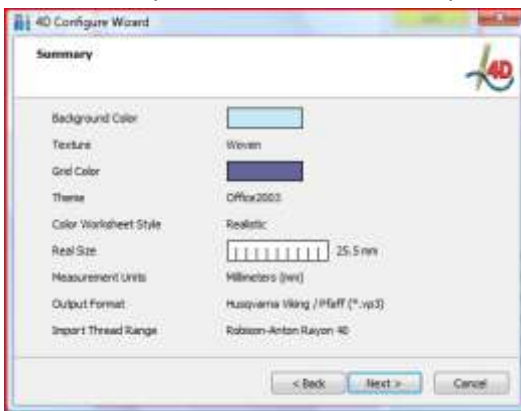
31. Check the Include all hoops for installed machines in MyHoops if desired. Next.



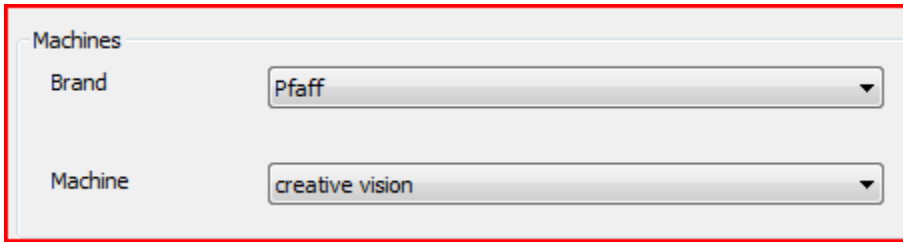
32. Use the Hoop Manager to add or delete hoops from your list. Next.



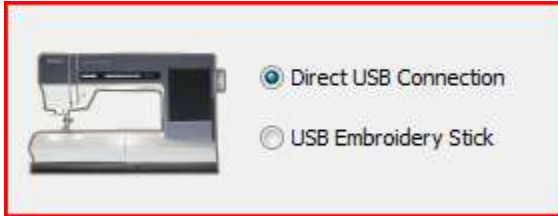
33. The Summary window indicates the options you have selected. Next.



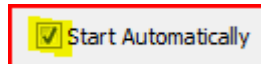
34. Under the Select Machine for Send 1, choose the primary machine you wish you use. Next.



35. The options on the next window vary based upon the available connections for your machine. Select the appropriate choice for your machine. Next. Example:



36. If asked, select Start Automatically in the next window. Next.

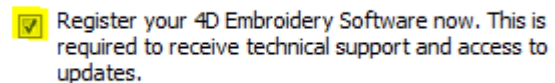


37. The summary screen indicates the selected options. Next.

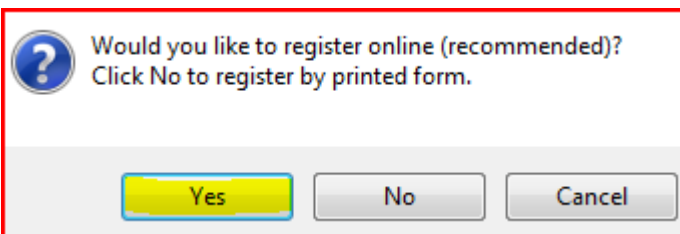
38. If you wish to configure a second machine or a second Send method, select Next. If you are finished selecting Send options, choose Finish.

Register Machine/Software

1. The InstallShield Wizard is complete. Ensure you have an active internet connection. Choose

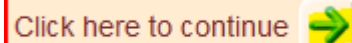


Register your 4D Software now. Next.



2. Select Register online. Next.

3. A Registration window opens showing information unique to your computer & hardware.



Choose Click Here to Continue.

4. Enter the appropriate registration name, email & zip if you have previously registered ANY other machine or software with Viking or Pfaff. Then choose Click here to continue. If you have never

registered any machines or software with VSM, select New Customer. Follow instructions to register the software.

Install Photos

1. Return to the Menu. Click once on Install Photos.



2. The Install Shield Wizard for 4D Main Collection photos opens. Choose Next.
3. Accept the License Agreement. Next.



4. Select Complete installation. Next.
5. Select Install to begin. 4D starts copying necessary files from the DVD.
6. When the Status bar indicates that all files have been copied, select Next.
7. Select Finish.

Install Clipart

1. Return to the Menu. Click once on Install Clipart.



2. The Install Shield Wizard for Main Collection Clipart opens. Next.
3. Accept the License Agreement. Next.

4. Choose Complete installation. Next.
5. Select Install to start the installation process. The Status bar indicates the progress of files copied.
6. Select Finish.

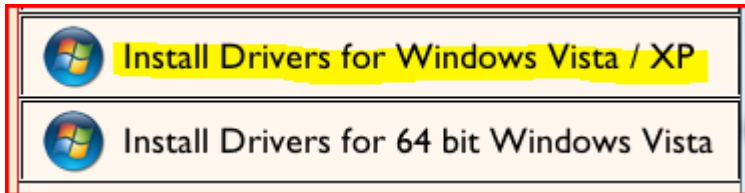
Install Acrobat Reader

Most consumers do not need to install the Acrobat Reader software as this is already installed on their computer.

Install Driver

Customers should only install one driver.

1. If you own a computer running Microsoft Windows XP, select Install Drivers for Windows

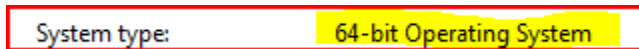


XP/Vista.

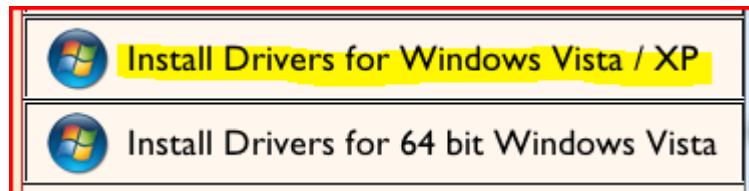
2. If you own a Vista computer, you will need to be certain whether you are running a 32-Bit Vista operating system or a 64-Bit operating system. If you know, proceed with step 4 below. If not, follow step 3 to determine which operating system you have.



3. Go to Start→Control Panel. Choose System. Note the System Type. It should state either 64-Bit Operating System (shown here) or 32-Bit operating System.

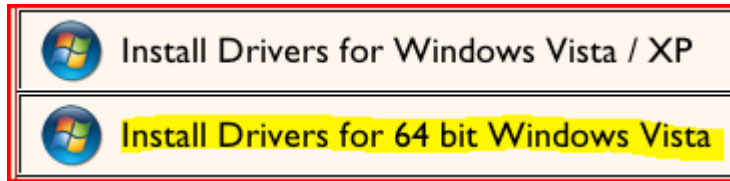


4. If your computer is running on a 32-Bit Vista Operating System, select install Drivers for



Windows Vista/XP

5. If you own a 64-Bit Windows Vista Operating System, select Install Drivers for 64 Bit Windows



Vista.


6. Once you have selected the appropriate driver, select the appropriate language and begin the installation.
7. Choose Next to continue, accept the license agreement and choose Next again.
8. Choose Install to start the installation.
9. If asked, allow installations from VSM.
10. Select Finish.

Install the Creative Vision or Designer Diamond Embroidery Communication Disk

1. Insert the embroidery communication disk included in the embroidery box (inside the black CD/DVD case). [*Other machines should have an appropriate communication disk. Follow the appropriate installation instructions for your machine if you do not have a CV or DD.*]
2. Select Run Menu.exe
3. Choose Install embroidery Machine Communication Software.
4. Select English.
5. Next. Next. Agree to license. Next.
6. Find the code on the front of the CD and enter this when prompted.
7. Choose Complete installation.
8. Install.
9. If you have already set up 4D Configure, you can Cancel out of this portion of the installation.
10. Finish.

Smart Update – Determine updates needed

1. If you own 4D Family Portrait, install it first and then the 8.2 update file which is included on the 4D Family Portrait installation disk.
2. Open 4D Embroidery. Go to Start→All Programs→4D Embroidery System→4D Embroidery Extra.


3. Open 4D Configure . Click **ONLY ONCE** on Smart Update. If you double click, you will have a mess! It will cause sharing violations and all sorts of confusion. Please don't do this!



4. Click to Continue.
5. The Smart Update window shows all updates which you have not yet completed. In most cases, you may disregard the 3D to 4D Thread Import update.
6. You should see either the Embroidery System 8.21A or Embroidery System 8.21B update. 4D Embroidery knows which of these you need. In this example, the 8.21A update was needed.

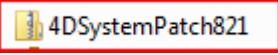
4D Embroidery System 8.21A

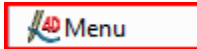
7. Select the update and click the File icon to download this update. Make sure you note the location where you are saving the update file. When you have completed the download, double click on the file to begin running the update. The 8.21A update version is quite lengthy and will take a while to download even on a high-speed internet connection. The 8.21B update version is smaller and does not take as long to download. Both updates are the SAME. The only difference is whether you had already installed the 8.2 update on the 4D Family Portrait disk for those who own this software module.

Filename	File Type	Download
4DEmbroideryPatch821A.exe	Executable Installation	148 MB 
Download to a temporary location and then double click on '4DEmbroideryPatch821A.exe' to run the update.		

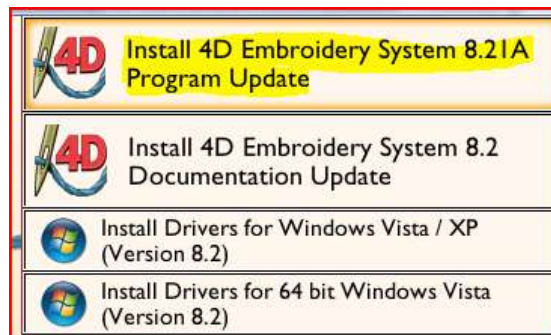
8. When prompted, browse to save the zipped file in the C:/4DEmbroidery folder so you will know where to locate the file to install it once it has been fully downloaded.
9. Return to download each of the other smart update files using the same process.

Install the 8.21 Update

1. Go to Start→Computer. Double click to open the C:/ drive. Double click to open the 4D Embroidery folder where the update file was saved previously.
2. Find the 4DSystemPatch821 file. . Hover the mouse over this file and right-click the mouse. Select Extract All. Extract the files into the C:/4DEmbroidery folder (use Browse if this is not the selected folder).
3. If asked, replace the Drivers folder.
4. If asked, choose Copy and Replace for similar file names.
5. Open the computer folder again C:/4DEmbroidery and double click on the file Menu.



6. Click once to Install Embroidery System 8.21A or B (depending on the appropriate update you

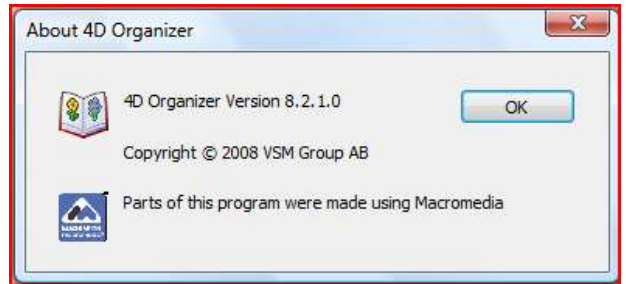


selected earlier).

7. Select English.
8. Choose Next on the InstallShield Wizard window.
9. Accept the License agreement. Next.
10. Next. Accept License. Next.
11. Install.
12. Cancel out of the 4D Configure Wizard as you have already done this.
13. Click Finish.
14. Return to the Menu and click once on Install 4D Embroidery System Documentation Update.
15. Next. Accept the License. Next.
16. Install.
17. Finish.
18. Return once more to the Menu and install the appropriate drivers.
19. Close.

Check for correct software version

1. Start 4D Embroidery Extra.
2. Start 4D Organizer.
3. Select Help→About 4D Organizer.
4. The most current version is Version 8.2.1.0



These instructions may be printed and distributed freely as long as they bear the following copyright notice:

© 2009 Simple Software Solutions
Jeanne Styles
www.learn4D.com

i