

## CONTENTS

### INTRODUCTION

Why Use Embroidery Software? .....	2
Where Do I Obtain Embroidery Designs? .....	3
Copyright Cautions.....	3
What Type of Computer Do I Need? .....	4
Embroidery Machine Support.....	5
Software to Machine Connections.....	6
Available 4D Software Packages .....	7

### 4D CONFIGURE

Introduction.....	13
4D Configure Wizard .....	14
Registering Your Software .....	18
Smart Update .....	18

### 4D FILE ASSISTANT

Introduction.....	19
Computer Files and Folders.....	19
Copy a Design to the Computer .....	20
Start 4D File Assistant .....	20
Open an Embroidery File .....	21
2140/2144/2170 Connections .....	22
Send a Design from the Computer to the Machine .....	22
Send a Design from a Creative Card to the Computer .....	24
Smart Card Station Connection .....	25
Send a Design to or from the Creative Smart Card Station.....	26
What If I Have A Problem? .....	27
Additional Help .....	28

## 4D ORGANIZER

Introduction.....	29
Open a Design in 4D Organizer .....	30
Sort Designs .....	31
Send a Design .....	33
Preview or Print A Design .....	34
Insert Automatic Trim Commands.....	35
Additional Help .....	36

### 4D EMBROIDERY EXTRA

Introduction.....	37
Exercise 1: “BHS Soccer Logo” .....	38
Open a New Design.....	38
Move and Resize the Soccer Player.....	39
Add a Banner Shape.....	41
Add Text Inside the Banner .....	43
Color Sort.....	46
Color Change.....	47
Align Each Part .....	48
Combine and Color Sort.....	49
Save the Final Design .....	51
Exercise 2: “A Needle Pulling Thread” .....	53
Begin a New Design.....	53
Create Needle and Thread Shapes.....	53
Encore .....	55
Add a Large Needle and Thread Shape .....	57
Create a New Font with Quick Font Wizard.....	58
Add Text with the New Font .....	60
Combine and Split the Design .....	62
Exercise 3: Endless “Toy Boat” .....	64
Open a design.....	64
Edit the Design.....	65
Endless .....	68
Other Edit Tab Features .....	70

4D Extra Express Design Wizard.....	71
Exercise 4: “Turquoise Design”-Express Embroidery	71
Exercise 5: “Redwork Quilt Block” – Express Trace ..	71
Exercise 6: “Flower” - Express Appliqué Design.....	71

#### 4D VISION

Introduction.....	71
Exercise 1: “Flower Tote Bag”.....	71
Other 4D Vision Features .....	71





#### ADDITIONAL HELP

#### TEACHER’S GUIDE

Recommended Classroom Supplies .....	71
Recommended Teacher Preparation .....	71
Suggested Class Schedules .....	71
Option 1: Two-Day Seminar .....	71
Option 2: Three 3-Hour Classes.....	71
Option 3: Software Club .....	71

#### 4D EXTRA EXPRESS DESIGN WIZARD

#### EXERCISE 4: “TURQUOISE DESIGN” - EXPRESS EMBROIDERY

1. Return to the Design tab. Start a New File .
2. Use the Hoop icon  to choose the Creative Large Hoop (225mm x 140mm) in the horizontal orientation.
3. Choose the Express Design Wizard icon  to start creating a new embroidery design from a piece of clip art.
4. Select Create Express Embroidery→Next→View Picture  and open the folder: C:/4DEmbroidery/Samples/4DEmb/Pics2/Fashion. Choose the File “1CFa13.png” then Next.
5. It is not necessary to rotate this design, so Rotation is 0 degrees, then Next.
6. The entire picture will be used, so it is not necessary to crop the image. Choose Next to advance to the following screen.



7. The Reduce Colors pop-up window indicates that the original clip-art picture has six colors and it recommends stitching the embroidery design in six thread colors as well. Using six threads is reasonable, so for this design it probably would not be necessary to make any changes. However, for a picture with many colors, it may be easier to reduce the number of color changes. Click the down arrow on the Number of Colors box to reduce the embroidery to four colors. Note that the right-hand window indicates how reducing the number of thread colors alters the image. If this reduction is acceptable, continue with creating the design. If it is not, increase or decrease the number of thread colors. Change back to six colors for this exercise. Choose Next to continue.

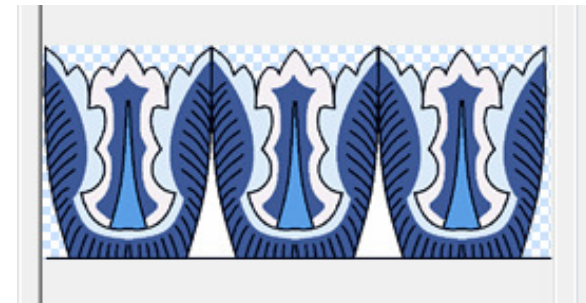
8. The Choose Thread Colors pop-up window suggests thread colors in the default thread range that has been set up inside 4D Configure. Change All to Robison-Anton Rayon 40. Thread changes can be moved up, down, or merged if desired (do not alter the order for this exercise).

*Helpful Hint:*

*To use threads from your own thread collection, choose your own threads in My Threads (located in 4D Configure).*

9. Still inside the Choose Thread Colors window, notice that this design has white areas in the background. These white areas will be converted

to white satin stitching. To remove some of the unnecessary white space, choose Automatically Remove Background Color. Just underneath that button, Remove Main Background Only has been auto-selected. Look at the Thread Color Preview image of the design (right window). A blue and white checkerboard indicates where the white space will be removed.



10. Also, notice that the preview window shows three additional regions of white space at the bottom of the image. To remove these regions from the embroidery design, select Remove All Background Color Areas. Once again, the preview changes to indicate how this will alter the embroidery design.

11. Choose Picture Options and select these buttons: Black Lines = Expand Pixel-Thin Lines, Area Sensitivity = Medium, then choose OK.

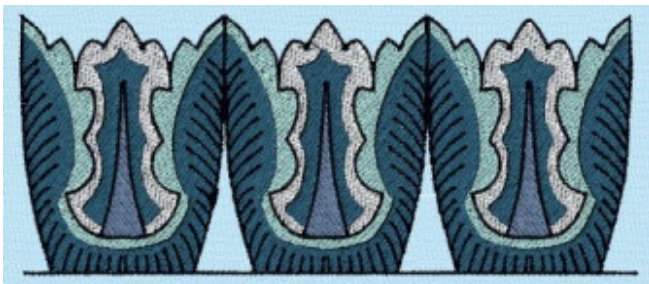
12. All options have been correctly set for this window, so choose Next.

13. In the Fabric and Stitch Type Options window, choose Fabric = Woven and Underlay box = checked. Fabrics often draw up slightly with dense embroidery designs, depending on the type of fabric and other factors. Selecting the appropriate fabric type instructs 4D Extra to increase or decrease the density of a design to compensate for the draw of that fabric type. If appropriate for your design, you may add further stabilization by turning on the Underlay Stitch option.

*Helpful Hint:*

*Use the Back button to return to the previous screen and make changes to the express design.*

14. Move the slider bar to the far left side to set the Preferred Stitch Type to fill (Fill, 0). Choose Next.
15. The final window shows a preview of the embroidery design and information about the size and number of stitches. Choose Finish.
16. Save the new design as "Turquoise Design" in the My Design folder.



**Notice several things about the automatically created embroidery design:**

- It was easy! That's the best part!
- Different regions of the design show varying fill patterns and angles. This is a hallmark of well-digitized designs. Varied fill patterns and angles create interest and a three-dimensional look for an embroidery design. Note, however, that fill patterns and angles may not be changed in 4D Extra. 4D Design Creator adds this capability.

4D Design Creator provides the same easy-to-use process to create your own design, but adds many expanded features beyond those included in the 4D Extra Express Design Wizard. 4D Design Creator is included in the 4D Suite software package or may be purchased as a stand-alone software program. 4D Design Creator gives you the creative edge to alter any region of a design to one of over 250 different fill patterns. Convert regions to stippling, radial fills, and other specialty fills. Many other custom features are included in this software module.