

INSTALLATION INSTRUCTIONS FOR 4D EXPRESSMONOGRAM WIZARD (ADD-ON MODULE FOR 4D SOFTWARE - NO DONGLE)

BEFORE YOU BEGIN

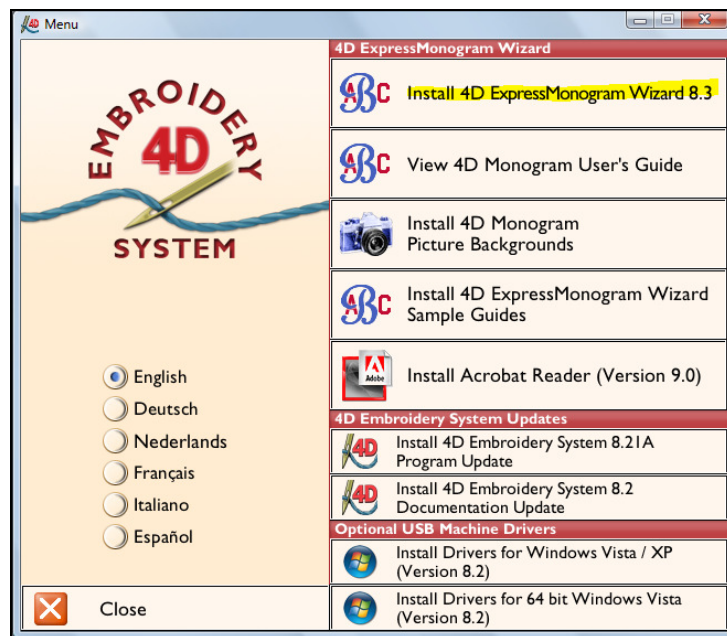
This document explains how to install the 4D ExpressMonogram Wizard. This is an add-on module to other 4D software (no dongle). You must have a copy of 4D Extra, 4D Suite, or 4D Pro and the dongle with one of these programs to run the 4D ExpressMonogram Wizard. Follow the installation instructions given below.

If you purchased 4D Monogram & Vision (program requires a separate dongle), follow the instructions in the document entitled, "How to Install 4D Monogram and Vision."

Important! Before you begin installation, disable your anti-virus program(s). For information about how to do this, see http://www.vsmsoftware.net/faqdatabase/search_4d.aspx.

INSTALL 4D EXPRESSMONOGRAM WIZARD

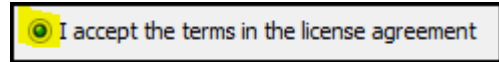
1. Insert the 4D ExpressMonogram Wizard DVD into the computer's DVD drive.
2. The Installation Menu opens (if not, select Run Menu.exe).
3. If you have not already updated your 4D software, you may need to install the 4D Embroidery System 8.21A Program Update before installing 4D ExpressMonogram Wizard. To find out the version of 4D Embroidery you are running, open 4D Organizer. Choose Help→About 4D Organizer. Before installing this program, the version should be 8.21. If not, download free instructions at www.learn4d.com.
4. Select Install 4D ExpressMonogram Wizard 8.3.
5. Choose English, then OK.



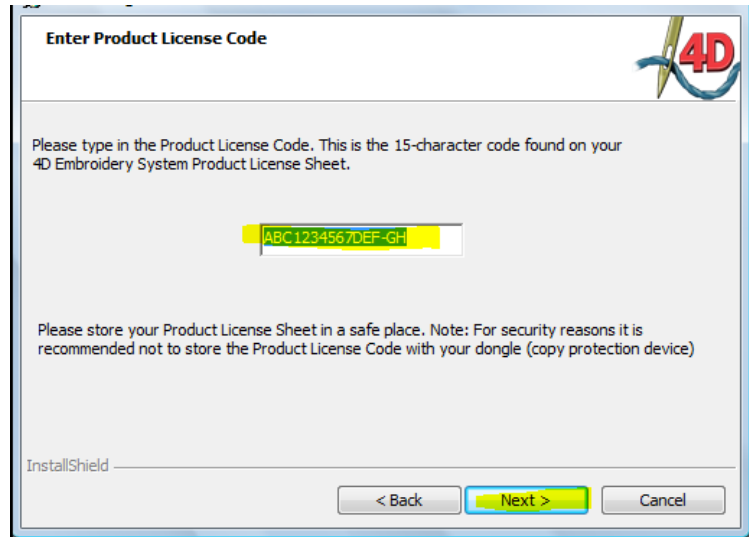
6. Wait for a moment until the InstallShield Wizard window opens. Click Next twice.



7. Accept the License agreement and choose Next.



8. Enter the Product License Code and choose Next.



9. Choose Complete Installation



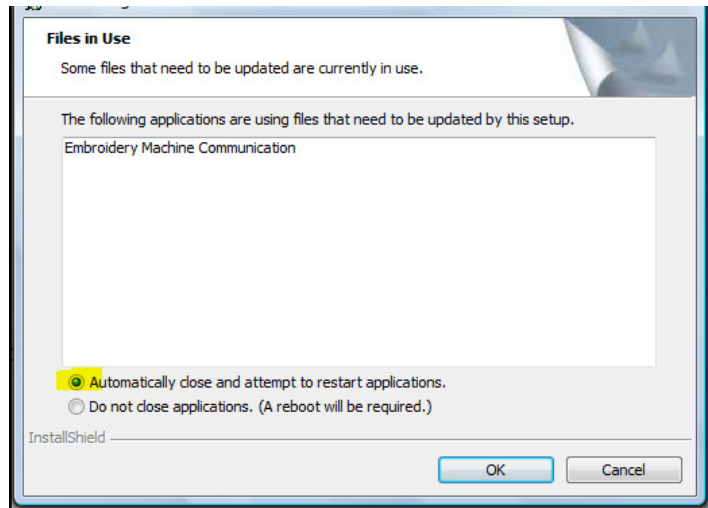
and Next.

10. Click Install to begin. Wait while the program installs.

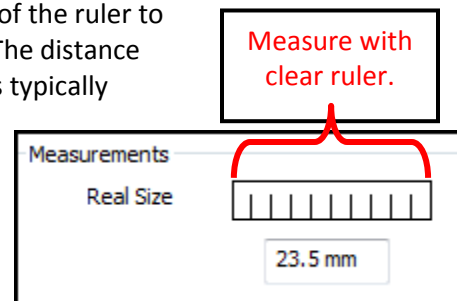
11. The program may request to close other programs if necessary. If so, choose Automatically Close and OK.

12. When the InstallShield Wizard completes the primary portion of its installation, 4D Configure Wizard opens. Choose Next *five times* to accept default settings.

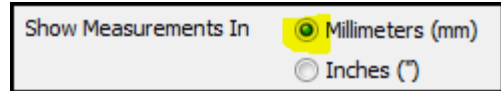
13. *If you have 4D Configure set properly with other 4D modules, skip to the next section to register & activate the dongle.*



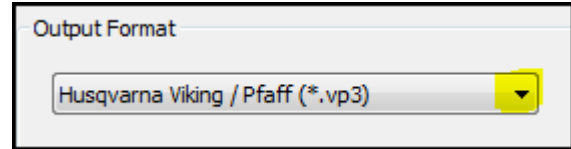
14. When the Real Size window opens, measure the distance of the ruler to the nearest 0.5 mm and enter this number into the box. The distance varies depending on your computer and screen size, but is typically somewhere between 23 and 33mm. Next.



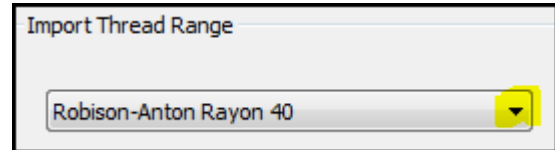
15. Choose Show Measurements in Millimeters. Next.



16. Click the small arrow next to Output Format and select the embroidery format for your machine. Pfaff and Viking machine owners should select Husqvarna Viking / Pfaff (*.vp3). Owners of other machine brands should choose their appropriate format. Next.

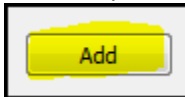


17. Click the small drop down arrow to choose your preferred primary thread brand and weight. You will still have access to all brands & weights when you run the program, this will simply be the default selection. Next.



18. It is not necessary to adjust MyThreadRanges at this time. However you may return to this later and enter threads you own if desired. Next.

19. Under the MyMachines window, choose Add to select your embroidery machine.

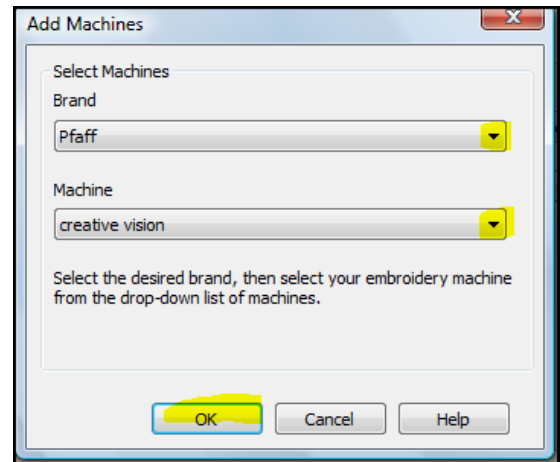


20. On the Add Machine window, use the drop down arrows to select your machine(s). OK.

21. Select Include All Hoops for my machines (or add just the hoops you own). Choose Next three times.

22. Go to Finish (or configure a second machine if desired).

23. Installation is complete.



REGISTER SOFTWARE

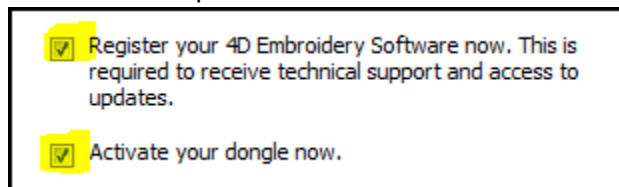
1. The InstallShield Wizard indicates that the installation is complete.

2. Connect the computer to the internet if it is not already connected.

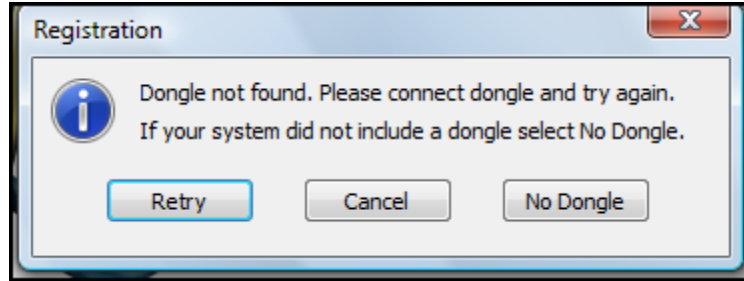
3. Insert your 4D dongle (red or blue).

4. Wait just a little while until the computer indicates that it has installed the device drivers for the dongle.

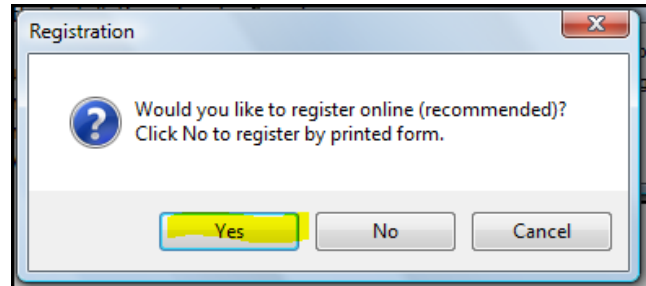
5. Check the boxes to Register and to Activate the dongle. Finish.



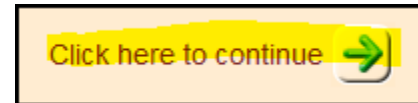
6. If your dongle is not in the computer, the installation wizard will remind you to insert it at this time. If you receive this error message, insert the dongle into a USB port on your computer and select Retry.



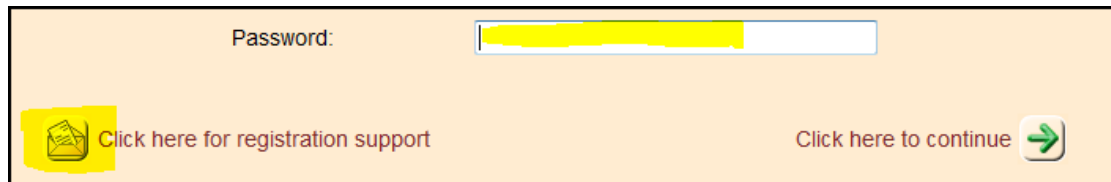
7. Select Yes to register online. If you do not have internet access, select No and you will be required to mail in registration.



8. Choose Click Here to Continue.



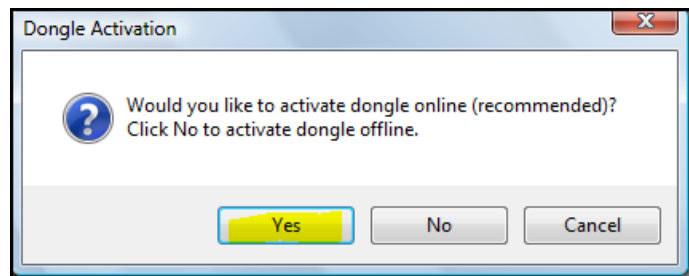
9. Enter your 4D software password or select assistance to register. Click to continue.



10. Use the drop down arrow to select your country and the appropriate location of your dealership. Select the dealer from whom you purchased the program and then Click to continue. It may take a moment before the computer indicates that you are registered. *Do not click to continue more than once.* Wait until the Smart Update window appears to show that registration is complete. Close this window.

ACTIVATE DONGLE

1. You may be returned automatically to a screen to activate the dongle. If not, open 4D Configure (Go to Start→All Programs→4D Embroidery System→4D Configure).
2. Select Yes to Activate the dongle online.



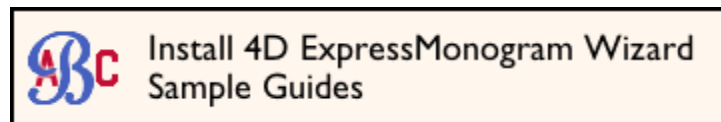
INSTALL PICTURE BACKGROUNDS

1. Return to the Menu.
2. Click Install Monogram Picture Backgrounds.
3. Choose your language. OK.
4. The InstallShield window opens. Wait as the installation progresses.
5. When the Monogram Picture Background InstallShield Wizard opens, choose Next.
6. Accept the License Agreement. Next.
7. Click Install to begin.
8. After the installation is complete, click Finish.



INSTALL SAMPLE GUIDES

1. Return to the Menu.
2. Select Install 4D ExpressMonogram Wizard Sample Guides.
3. Choose the Language. OK.
4. When the Samples Guides InstallShield Wizard window opens, choose Next to begin the installation.
5. Accept the License Agreement. Next.
6. Choose Install.
7. Select Finish when the installation is complete.



ADDITIONAL RESOURCES

- If you do not have Adobe Acrobat Reader 9.0 (or later) on your computer, install it from the Menu. To download the most recent version of Acrobat Reader via internet, go to <http://get.adobe.com/reader/?promoid=BUIGO>.
- If needed, install the current machine communication drivers for Pfaff or Viking machines from the Menu. Most users will not need to do this step as they have already updated the drivers.
- Find additional information about installation by selecting View 4D Monogram User's Guide from the installation Menu. Scroll to pages 28-35.
- Find answers to Frequently Asked Questions (FAQs) about 4D software at http://www.vsmsoftware.net/faqdatabase/search_4d.aspx.
- Visit www.4Dmonogram.com for sample projects, instructional videos and other 4D resources.
- Find information about *Software Solutions: 4D Embroidery* workbooks at www.learn4d.com.